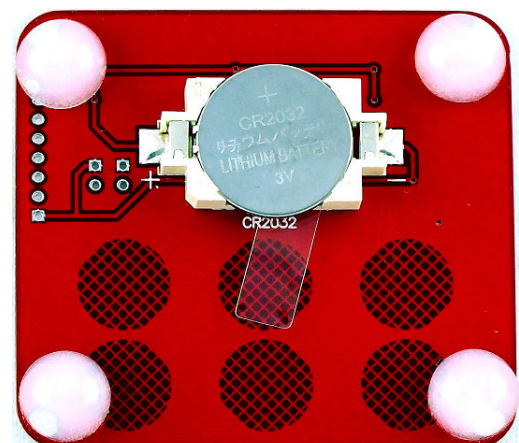
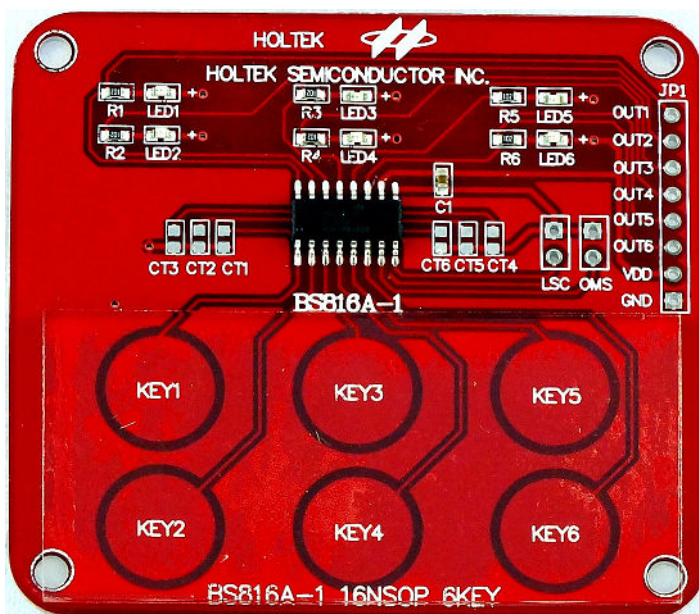


Standard 6-Touch Keys

BS816A-1

Characteristics

- Touch Keys : BS816A-1 16-pin NSOP
- Operating voltage : 2.2V ~ 5.5V
- Low standby current
- Auto-calibration
- Reliable touch detections
- High power supply rejection
- Standby and normal operating power modes
- Maximum key on duration time detection
- Power supply voltage drop rejection function
- Level Hold, low active
- 6 Touch key inputs
- 6 Outputs – NMOS / CMOS-Direct
- 2 Options – OMS (Output Mode Select) / LSC (Lower Standby Current)
- Sensitivity adjustment using an external capacitor
- Minimal number of external components



Applications

Consumer Products, Home Appliances, Industrial Control, Health Care Products, etc.

Application Circuit

